

**"U.S. PUBLIC LAND SURVEY MONUMENT RECORD"
OZAUKEE COUNTY, WISCONSIN**

TYPE OF MONUMENT: Berntsen plastic monument w/ brass cap

STATE PLANE COORDINATES: N: 569572.13

E: 2559181.82

ELEVATION: 794.14 M.S.L. DATUM: 1929

FIELD BOOK: K&A Folder PAGE: 857

FIELDWORK BY: Kapur and Associates 1999

RECORD DRAWN BY: MARK BANTON

CONTROL ACCURACY:

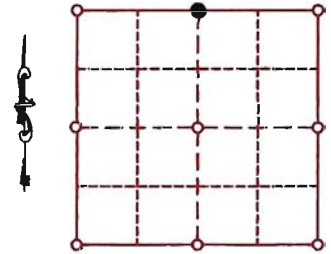
HORIZONTAL: 3RD ORDER, CLASS 1 VERTICAL: 3RD ORDER

CORNER INDEX No. 1082

SECTION 5

TOWNSHIP 12

RANGE 22



LOCATION

BASIS OF MONUMENT LOCATION

1999 - KAPUR 7 ASSOCIATES RECOVERED A STONE AND REPLACED WITH A BERNSTEN MONUMENT WITH BRASS CAP. TIES WERE SET

2007 - MARK BANTON S-1691 REDRAW DOSSIER TO SHOW CO-ORDINATES AND ELEVATION FROM OZAUKEE COUNTY REMONUMENTATION PROGRAM

SEAL:



DATA SHOWN HEREON
IS CERTIFIED AS CORRECT:

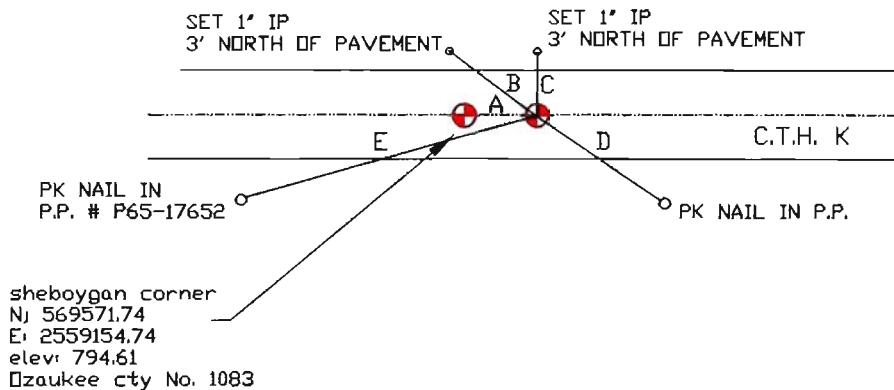
Mark Banton

Ozaukee County Surveyor

DATE: 15 FEBRUARY 2007

TIE SKETCH

- A = 27.07'
- B = 31.42'
- C = 14.95'
- D = 49.04'
- E = 100.50'



MAINTENANCE RECORD

- MONUMENT LEGEND**
- = BERNTSEN MONUMENT (SEE TYPE OF MON. ABOVE)
 - = CONCRETE MONUMENT w/ BRASS CAP
 - = CONCRETE MONUMENT w/ CROSS
 - = 5/8" REBAR WITH ALUMINUM CAP

DATE	BY WHOM	REMARKS